



www.dsunhome.com

PRE-ASSEMBLED BUILDING
SYSTEM SOLUTION

SERVICE

PROVIDER

400 0633 518

5th floor, Dsun Tower, No.168, Yantai Road,
Rizhao, Shandong Province

A
LEADER
IN
INTELLIGENT
MANUFACTURING
OF
GREEN
BUILDINGS

CONTENTS

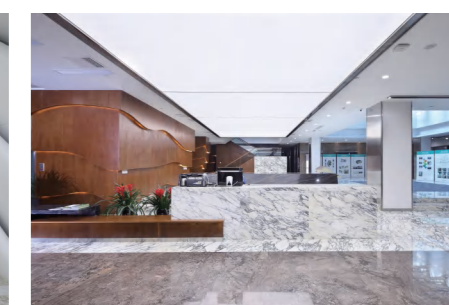
- COMPANY PROFILE
- PRODUCT SYSTEM
- DESIGN CAPACITY
- MATERIAL SYSTEM
- GLOBAL PROJECT REFERENCES

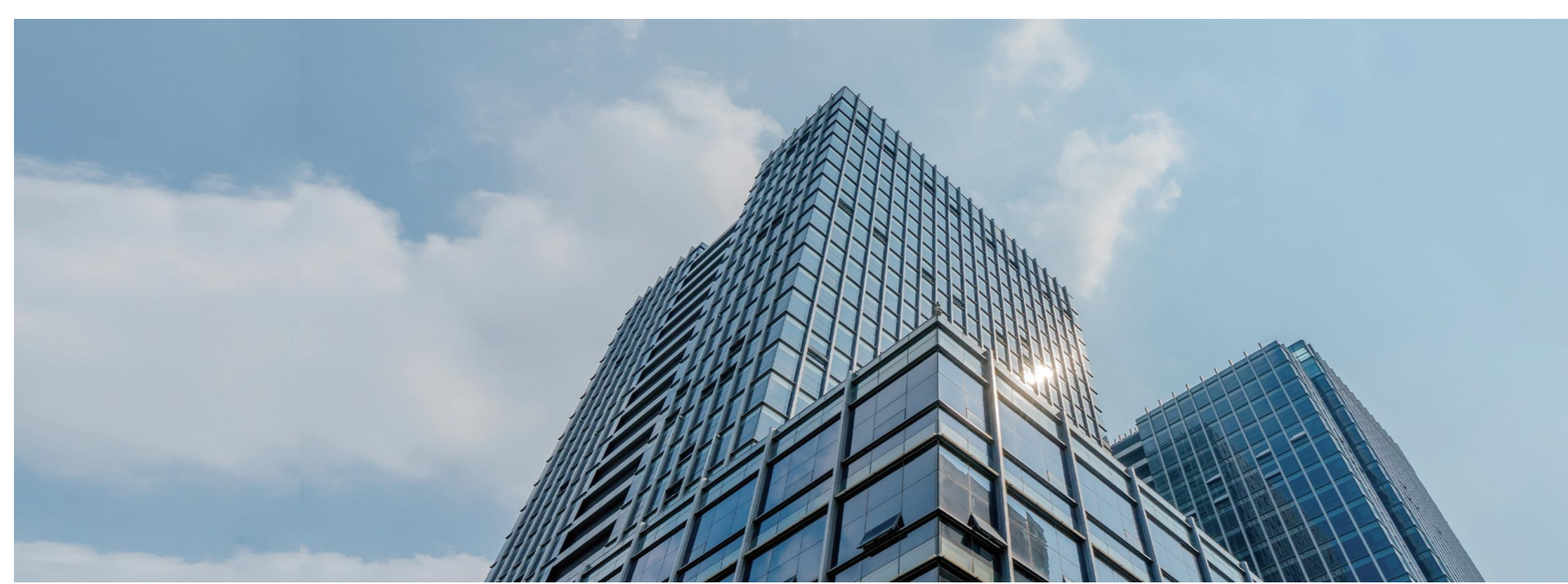




DSUN GROUP

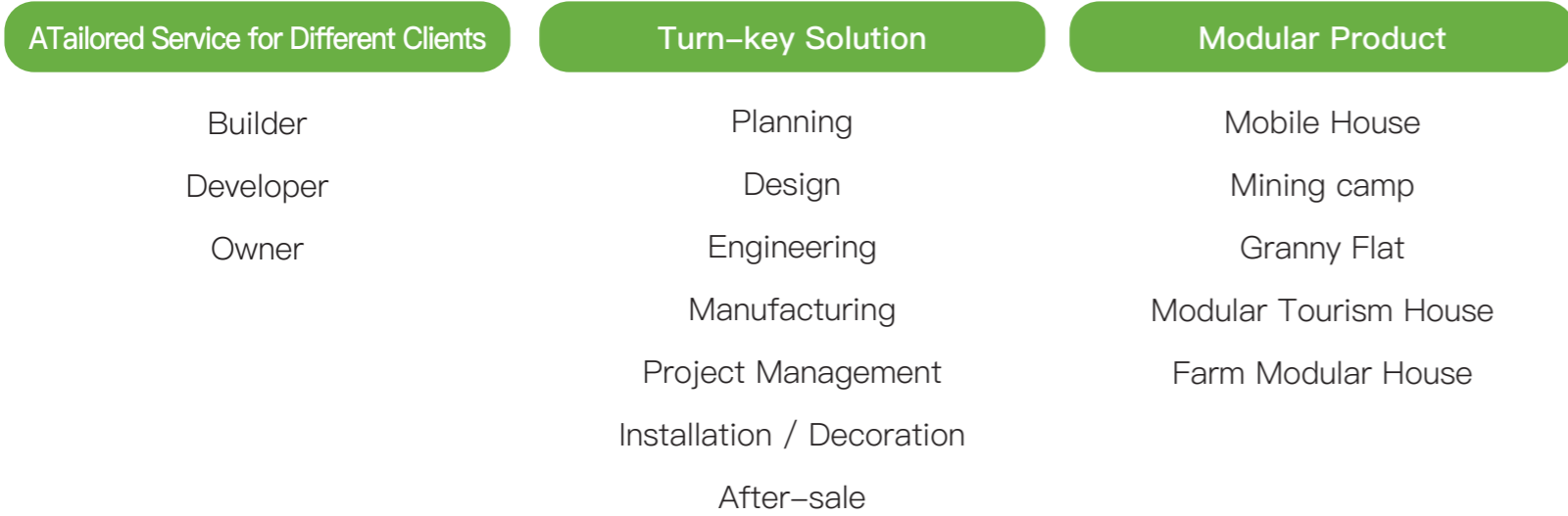
Established in 1992, DSUN Group is a large conglomerate focusing on three major industries – real estate development, research and promotion of prefabricated light steel buildings and utilization of new energies.





DSUN HOME

Established in 2009, Rizhao DSUN HOME Construction Co., Ltd is affiliated to DSUN Group, the company has defined the research and development, design, manufacturing and construction of new-type housing as the main business.

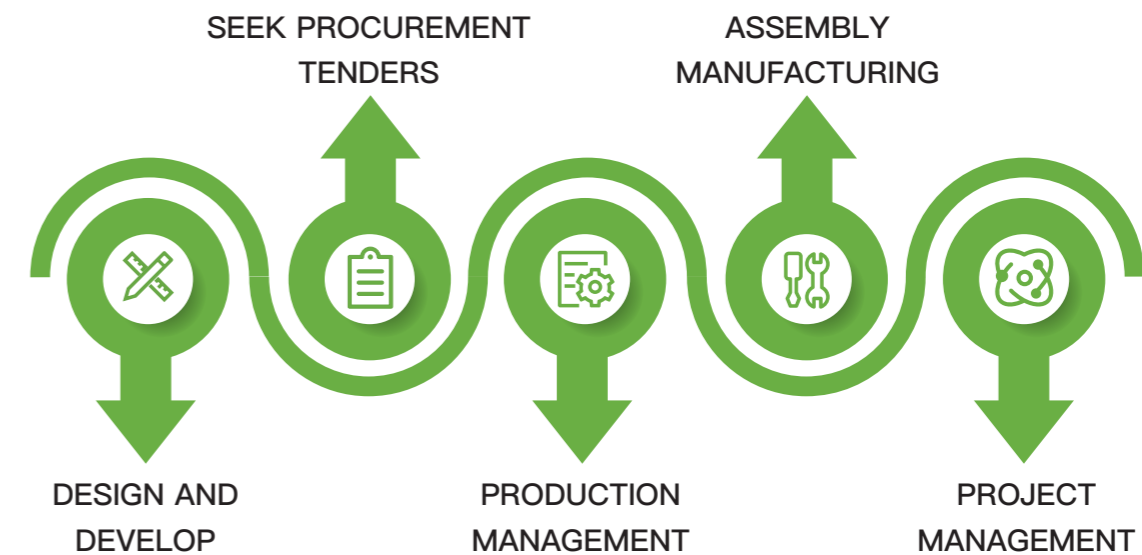


LIGHT STEEL FACTORY

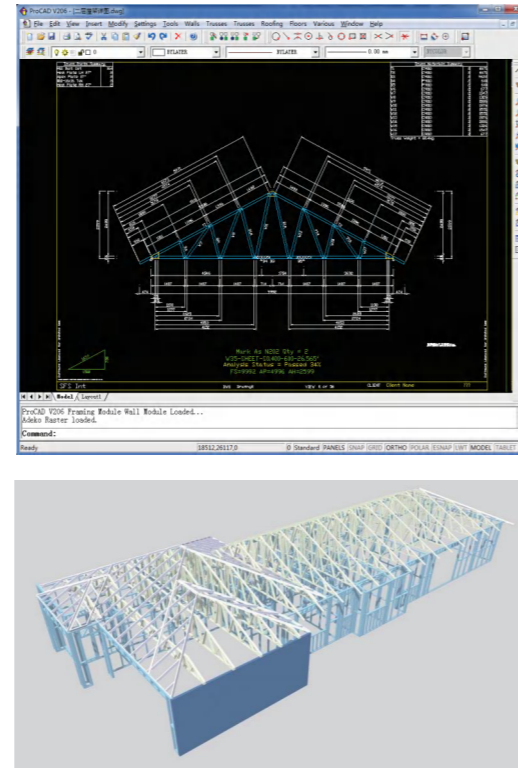
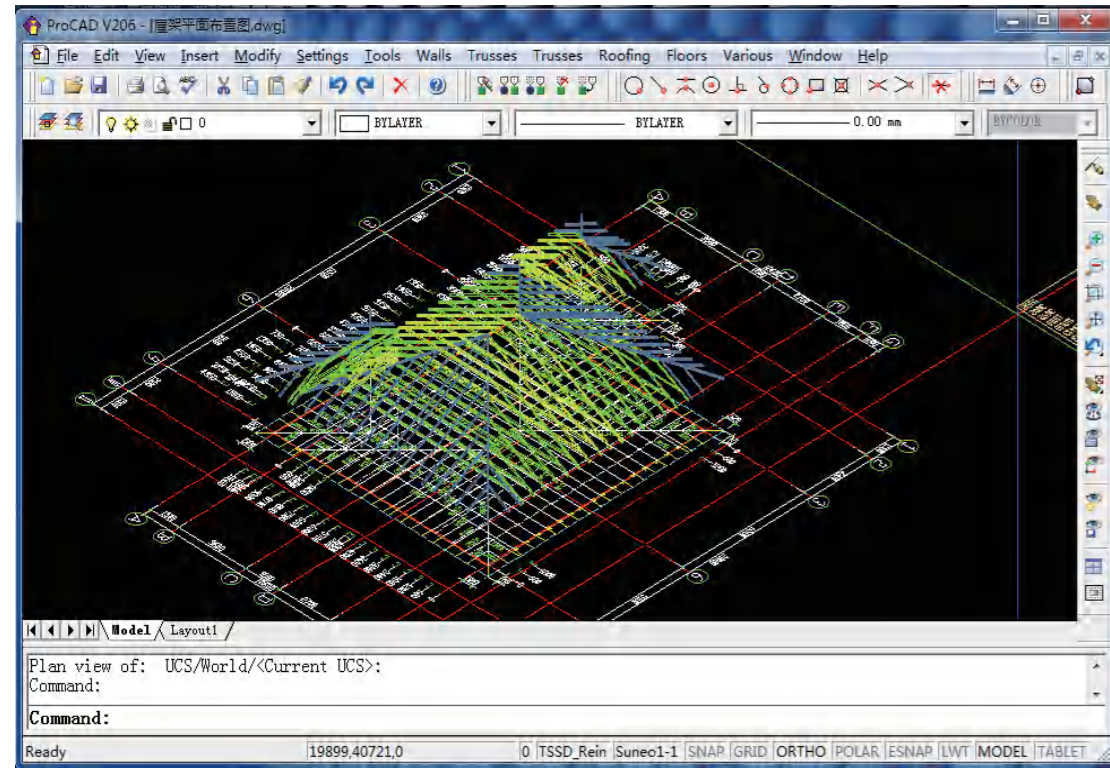
With building area of 250,000 m² and 9 production lines, the annual production capacity can reach 600,000 square meters, realizing the manufacturing of the assembled "all-system+all-module+all-assembly" integrated modular building system products.



THE WHOLE INDUSTRIAL CHAIN INTEGRATES INDUSTRIAL DEVELOPMENT



DESIGN CAPACITY



PROJECT CASE

SECRET HARBOUR, PERTH PROJECT BUILDING AREA: 219m²



ELEVATION PLAN

ARCHITECTURAL RENDERING

PRODUCT SYSTEM




ROOF

- 1 Colorbond Roof
- 2 Anticon Insulation
- 3 Metal Top Hat
- 4 Batten
- 5 Metal Roof Truss


WALL

- 1 Gyprock
- 2 Glasswool Insulation
- 3 Light Steel Wall Framing
- 4 Sarking
- 5 Metal Top Hat Batten
- 6 Fiber Cement Board



ROOF

- 1 Colorbond Roof
- 2 Anticon Insulation
- 3 Metal Top Hat Batten
- 4 Metal Roof Truss



WALL

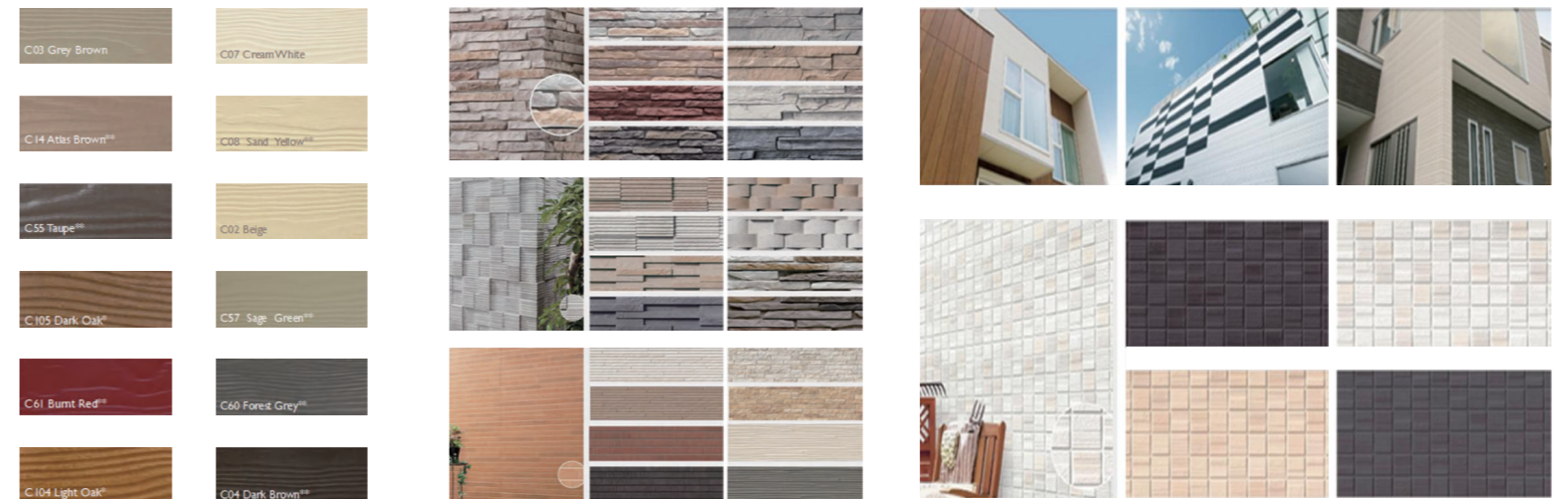
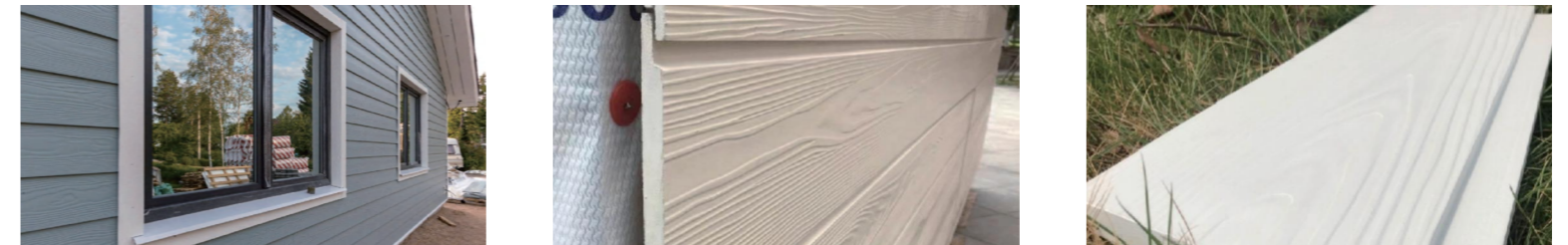
- 1 Gyprock
- 2 Glasswool Insulation
- 3 Light Steel Wall Framing
- 4 Sarking
- 5 Metal Top Hat Batten
- 6 Fiber Cement Board

MATERIAL SYSTEM

Steel Frame STANDARD: AS1397, G550, AZ150



Exterior Wall STANDARD: AS/NZS 1530, AS/NZS2908



Interior Wall —Glass Wool

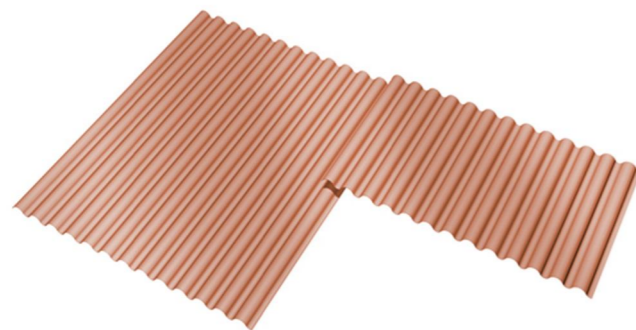
STANDARD: AS/NZS 4859



Product	Thick mm	Wide mm	Length mm	Price EXW Factory
CNCP2548	25	600	1200	\$0.96/m ²
CNCP5024	50	600	1200	\$0.96/m ²
CNCP5032	50	600	1200	\$1.28/m ²
CNCP5048	50	600	1200	\$1.92/m ²
CNCP5080	50	600	1200	\$3.21/m ²
CNCP5098	50	600	1200	\$3.95/m ²
CNCP10050	100	600	1200	\$4.01/m ²

Product	Thick mm	Wide mm	Length mm	Price EXW Factory
CNCP2548	25	600	1200	\$0.96/m ²
CNCP5024	50	600	1200	\$0.96/m ²
CNCP5032	50	600	1200	\$1.28/m ²
CNCP5048	50	600	1200	\$1.92/m ²
CNCP5080	50	600	1200	\$3.21/m ²
CNCP5098	50	600	1200	\$3.95/m ²
CNCP10050	100	600	1200	\$4.01/m ²

IMetal Tiles



Ceramic Tiles



LIFT-Sliding Doors

140 series



DOOR AND WINDOWS

STANDARD: AS1288

Casement Doors

- Serviceability wind pressure: 3000 Pa
- Ultimate wind Pressure: ... 4000 Pa
- Water pressure: ... 400 Pa
- Sound Proof: ... 40 Db
- Profile
- Thermal break aluminium profile.
- Atom frame with 20mm sealant.
- Glass
- Glass size = 12 or = 9mm clear double glazed
- Hardware
- Key lockable system
- Surface treatment
- Powder coating: 30µ
- Anodized: 20-25µ

10 YEARS GUARANTEE



SANITARY WARE



GLOBAL PROJECT REFERENCES

LIGHT STEEL VILLA



94 Erskine ,
Vic – Townhouse(5units)



560 Boronia rd,
Vic – Townhouse



New Zealand
Kit houses(30+)





- ① ② Banksia Grove Villa of Perth,Australia
 - ③ Secret Harbor Villa of Perth,Australia
 - ④ Two Rock Villa of Perth,Australia
-



New Caledonia Green Valley
– 109 houses



Sunshine Garden of California, USA

RESORT HOUSE



Hungary Bungalow Project



Chicago Modular
Resort Center



Guinea Camp, Africa



Comoros apartment decoration, Africa

